

# Zero-Volt eLoad by AMREL



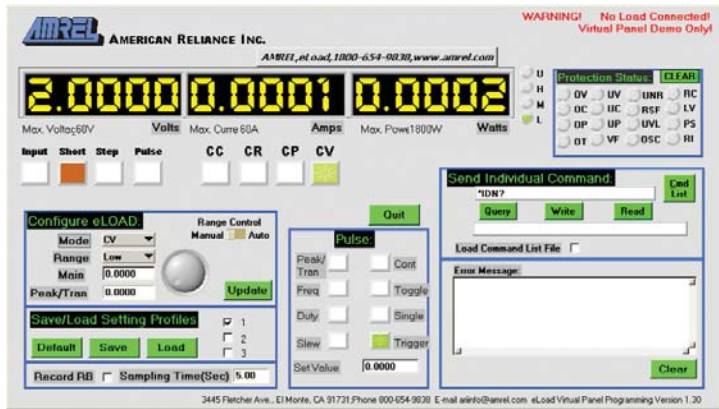
## Features and Benefits

- Full selection of Zero-Volt Models (ZVL) Line designed specifically for 0-volt test applications
- 3mV Resolution<sup>1</sup> for **Precision Constant Voltage Control**
- 600uA Resolution<sup>2</sup> for **Precision Constant Current Control**
- Dynamic Profiling for diverse test application and simulation of real-world events (99 Points + Analog Programming)
- Highest Current Density in a Bench-top Package - 0~200Adc
- **Broad 10~150Vdc Range Available**
- Local/Remote **Closed-cased Calibration** without trim pot adjustment and chassis cover removal
- AMREL **eLoad Virtual Panel**
  - ➔ CSV V-I Data-logging feature to **Capture Data for Polarization Curve Plotting**
  - ➔ Large Voltage, Current and Power Measurement Display
  - ➔ Simple Key Layout for **Maximized Control and Simple Maneuverability**
  - ➔ Powerful Command Prompt Window to enter SCPI commands or load custom list of commands for verification, debugging and automated testing requirements
- Feature-packed, Precision Control, Powerful Remote Programmatic User Interface, and Highest "Bench-top 0-V **eLoad** Current Density yields the **Only Smart & Economical 0-Volt Solution**"
- Customizable Voltage/Current/Power available to **Meet Our your Special Requirements**
- Designed to **Maximize Return on Investment with Minimal or Zero Maintenance Costs, Quality High Performance**, and useful features to jumpstart important testing applications today
- GPIB/RS-232 Interfaces
- LabVIEW Drivers



Please Note: <sup>1</sup> is based on a 10Vdc rated ZVL. <sup>2</sup> is based on a 20Adc rated ZVL

## Virtual Panel



## Model Selection

ZVL Power Rating – Voltage Rating – Current Rating **L**

**Power Ratings:** 60W/100W/150W/200W/300W/600W

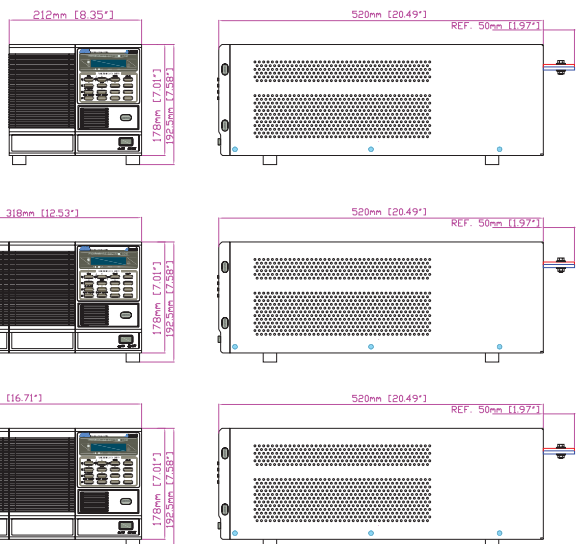
**Voltage Ratings:** 10Vdc/20Vdc/ 60Vdc/150Vdc

**Current Ratings:** 0Adc ~ 200Adc

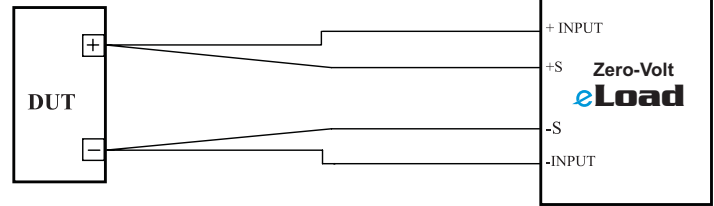
(Example: 200-10-120L → ZVL 200W – 10Vdc – 120Adc)

### Model Table

Model	Maximum Power	Maximum Voltage	Maximum Current
ZVL60-10-20L	60W	10V	20A
ZVL100-10-20L	100W	10V	20A
ZVL100-10-40L	100W	10V	40A
ZVL100-10-80L	100W	10V	80A
ZVL100-150-20L	100W	150V	20A
ZVL150-10-100L	150W	10V	100A
ZVL200-150-40L	200W	150V	40A
ZVL300-150-40L	300W	150V	40A



## Applications



### Types of DUT

#### Fuel Cell Testing

- Single Cell and Short Stack Fuel Cell Characterization, Break-in and Testing Applications
- Gstat Impedance Measurement
- Polarization Curve Data Capture (CV & CC Control)

#### Battery Testing

- Dynamic Profiling
- Battery Characterization
- Charge/Discharge and Lifetime/Cycle Tests

#### Switch-mode Power Supply Testing

#### Power Electronics/Component Testing

- DC-DC Converter Testing
- POL
- Semiconductors
- PV Testing

#### Photovoltaic (PV)

